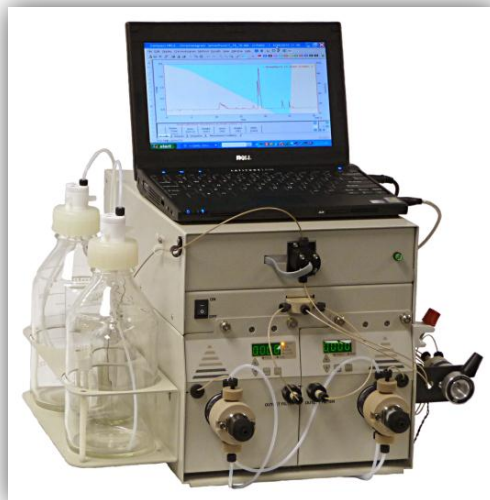


# LC<sub>2</sub> System

## Low Cost Binary Gradient System

**Complete High Pressure Binary Gradient System**



**Performance Beyond Its Price**

### **Complete System Makes Setup Easy**

The LC2 Binary Gradient System features a binary pump, UV detector, and Clarity software. For reproducible mixing, a static mixer forms part of the high-pressure binary gradient mixing kit. An injection valve with a 20  $\mu$ L loop, injector bracket, column holder, nuts, ferrules, and tubing complete the system.

### **Functionality and Flexibility**

From teaching to daily analytical analysis, the LC2 is rugged, repeatable, and reliable.

Two head sizes are available for flow rates to 10 mL /min to extend your separation flexibility. Variable volume autosamplers, additional detectors, Fract 1 & 2 fraction collectors are available as options to automate your system.

### **Data and Automation**

The LC2 System is controlled by Clarity software.

This highly popular software adds clarity to your separation and is extremely simple-to-use. The software also controls the pumps to create high precision gradients. The supplied computer takes up no additional bench space making this the most compact system on the market.

### **Choice of Material**

The LC2 Binary Gradient systems are available with Type 316 stainless steel or metal-free, biocompatible PEEK fluid path at no extra charge.

### **Meets Your Performance Requirements**

The LC2 Pump features an advanced design rapid-refill cam and a combination prime-purge valve/low volume diaphragm-type pulse damper, giving minimal baseline noise and low pulsation. Its flow rate of .001-5 mL/min (6000 psi) is suitable for most analytical applications. A 10 ml/min model is available for analytical and small scale prep.

The Fixed Wavelength 254 nm is a detector that gives high performance and minimizes noise. The 254 nm wavelength has long been the most popular for general purpose chromatography. The simplicity of the detector guarantees long lamp life and ease of use.

**All Pumps from Scientific Systems, Inc. Include a 3-Year Warranty**



[www.ssihplc.com](http://www.ssihplc.com)



[www.laballiance.com](http://www.laballiance.com)

Scientific Systems, Inc.  
349 North Science Park Road, State College, PA 16803  
Phone: 800-441-4752 ■ 814-234-7311  
Fax: 814-238-3752  
E-mail: [sales@ssihplc.com](mailto:sales@ssihplc.com)

# LC<sub>2</sub> System

## Low Cost Binary Gradient System

### Software Operation

The LC<sub>2</sub> is controlled by Clarity software. This software combined with a small pc allows for a fully featured data and control package without the use of additional bench space

The chromatography station package includes

- Clarity Software with complete set of printed manuals
- A/D converter for analog data acquisition
- Control module for control

Clarity has additional modules available for virtually any application and method you may wish to perform. It can be upgraded to multi systems and interface into a LIMS if required.

Clarity supports and meets CFR 21 11 requirements for applications requiring traceability.



### New Easy Prime Heads

The LC<sub>2</sub> Pump's head design, with the prime purge valve integrated into each fluid path, ensures the solvent is drawn from the reservoir even if the other pump is running.



### Reproducibility You Can Count On

The LC<sub>2</sub> Pump gives reproducible gradients and chromatography due to its pulse-free, low-volume fluid path. The result of this simplicity and low dead volume is reproducibility that is seen in the chromatographic performance.

Peak 1	Peak 2	Peak 3	Peak 4	Peak 5
0.248	0.422	0.700	1.079	1.638
0.247	0.419	0.698	1.078	1.638
0.247	0.418	0.696	1.075	1.636
0.247	0.419	0.698	1.077	1.635
0.246	0.418	0.696	1.076	1.635

	P. 1	P. 2	P. 3	P. 4	P. 5
Mean	0.2470	0.4192	0.6976	1.0770	1.6364
Std. Error	0.032%	0.073%	0.075%	0.071%	0.068%
Std. Dev.	0.071%	0.164%	0.167%	0.185%	0.152%

### Functionality and Flexibility

The LC<sub>2</sub> can be set up by the user in most cases. However, if you require assistance, our experienced technicians are available for on-site installation (additional charge).

### Ordering Information

Description	Part No.
LC <sub>2</sub> System SS 5ml/min	<b>B2305CLS</b>
LC <sub>2</sub> System PEEK 5ml/min	<b>B2305CLP</b>
LC <sub>2</sub> System SS 10ml/min	<b>B2310CLS</b>
LC <sub>2</sub> System PEEK 10ml/min	<b>B2310CLP</b>

### Options

Description	Part No.
Fract I Fraction Collector w/ rack for 13mm diameter tubes	<b>IS683870070</b>

Rev. 08/12/2010



[www.ssihplc.com](http://www.ssihplc.com)



[www.laballiance.com](http://www.laballiance.com)

Scientific Systems, Inc.  
349 North Science Park Road, State College, PA 16803  
Phone: 800-441-4752 ▪ 814-234-7311  
Fax: 814-238-3752  
E-mail: [sales@ssihplc.com](mailto:sales@ssihplc.com)